

# LED-Flood Light



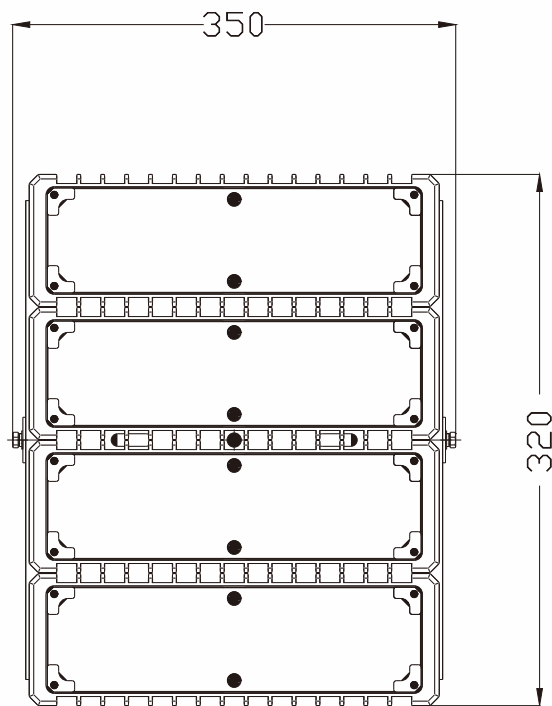
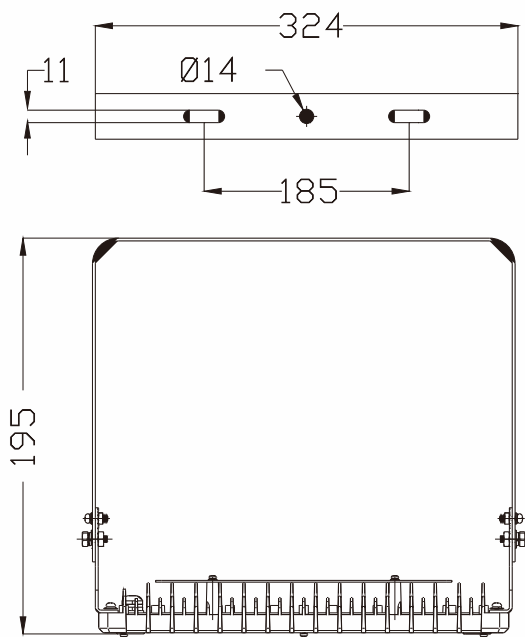
## 200W LED Flood light/Tunnel light (Product specification)



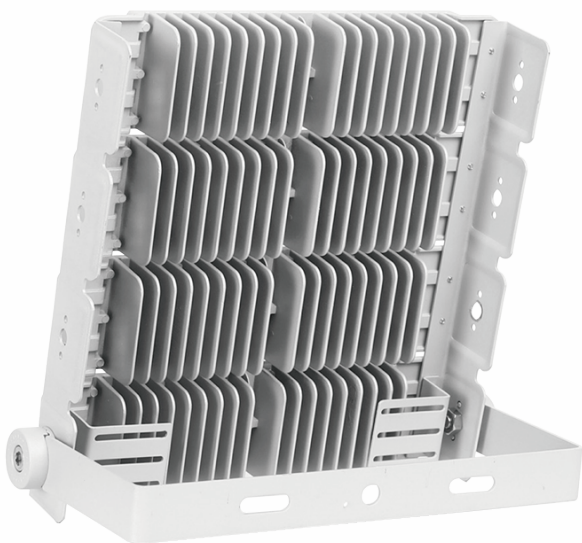
Brand	200W LED Flood light/Tunnel light
Product name	
Product number	Jan 11th, 2021
Date	



# LED-Flood Light



# LED-Flood Light





# LED-Flood Light



## Product Parameters

Product Number	SD1-200W		
Input Power	200W		
Lamp Brand	256PCS PHILIPS SMD3030		
Light Effect	130LM/W		
Input Voltage	AC85-265V	Frequency	50/60Hz
Power Factor	PF≥0.95	CCT	2700-6500K
Power Supply	MEANWELL ELG-200	CRI	≥70
Product Size	350*315*105 mm	Package size	365*330*150mm
Net Weight	4.7KG		
Lamp Body Color	Gray		
Beam Angle	60°/90°/75°*145		
IP Grade	IP65	Material	ADC12 die casting +Tempered glass
Service Life	50000hours	Temperature	-30℃+55℃
Certificate	CE/RoHS	Warranty	5 years

# LED-Flood Light



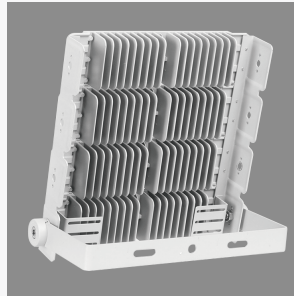
## Design Features



Single-mode group adjustment angle lighting design, 60°C / 90°C / 75°\*145



Import Philips or Eurons LED beads



ADC12 die-casting all-in-one molding, tempered glass and PCLenses can solve both higher protective luminaires and meet them optical angle requirements



Use 304 stainless steel screws



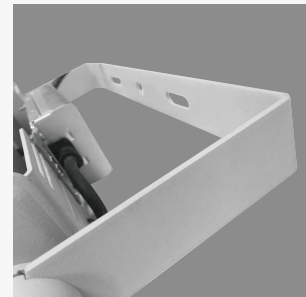
Internal wiring is waterproof, safe, Convenient.



Meanwell ELG or XLG driver

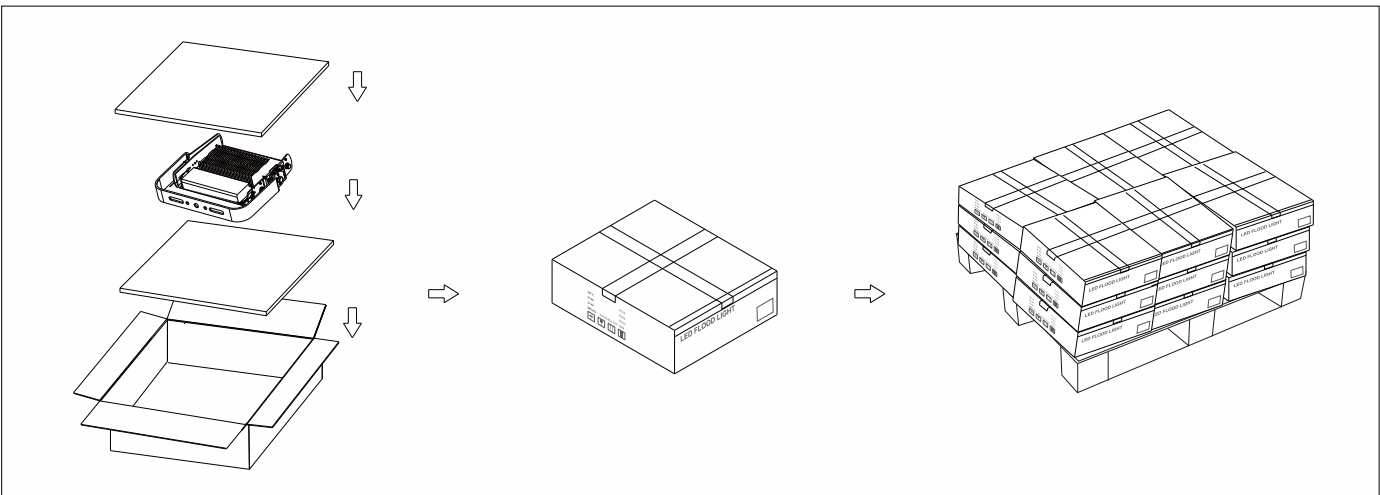


Independent power design to support more power, which is beneficial to Light body heat dissipation, reducing light decay and prolonging service life



Refined iron phosphide bracket

## Product Packaging



# LED-Flood Light



## ★Instructions for use

1. This product uses working voltage: AC100-305V 50/60 Hz, please do not exceed the working voltage range;
2. Because the lamp has glass accessories, in the handling, storage, please pay attention to light, do not weigh.

## ★Installation instructions

1. The mounting rod or mounting surface can be directly screwed through the mounting hole on the product mounting bracket;
2. After fixing the product, you can loosen the screws on both sides of the bracket and then change the angle of the bracket, which is equivalent to adjusting the installation angle of the fixture;
3. Working environment temperature -30 °C-+55 °C storage;
4. When installing the luminaire, the wiring and wiring are closed to prevent leakage;
5. When the external power cord is connected, the corresponding waterproof and water leakage measures must be taken;
6. Anti-glare design, uniform light distribution;
7. It supports dimming, can realize intelligent control of lamps , and improve energy saving benefits.

## ★Maintenance and repair instructions

1. Make sure that the power has been turned off before maintenance.
2. Regularly clean the tempered glass of the floodlights in order to maintain the high light transmission rate of the lamp;
3. Regularly clean the dust of the floodlight casing and radiator to maintain good heat dissipation performance;

## ★QUALITY ASSURANCE, AFTER-SALES SERVICE

The whole lamp is guaranteed for 5 years. Under normal conditions of use, quality assurance is based on the proper storage, installation, use and maintenance of the product; Due to improper installation and use, product damage caused by violation of product operating procedures is not covered by warranty; For quality problems during the quality warranty period, the company will choose to repair, exchange (parts) or replace new products during the warranty period. The method is solved; if the quality warranty period is exceeded, the materials and labor costs will be properly collected.