



**LED**

**STREET Light  
SLH**



**EMC LVD**



**IP66**

LM-80



# 6 Reasons To Choose Us

1

## Professional Lighting

Superb technology, stable quality.

2

## Much Longer Warranty

The whole fixture with 5 years warranty.

3

## Technical research

Professional research team, integrating design and production

4

## Top quality heat sink

Excellent heat dissipation with stable performance, No fading and much longer lifetime.

5

## Quality assurance

The item meet International quality and environmental certification.

6

## Novel design

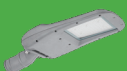
The design of the lamp body is novel and elegant. On the basis of maintaining the technology, the beauty of the lamp body is increased.



EMC

LVD

IP66



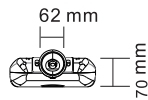
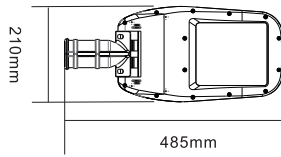
# APPLICATION

## High-quality professional LED production

Focus on lighting engineering construction, lamps can be used for a variety of occasions professional lighting technology to provide customers with high-quality lighting production services.



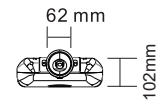
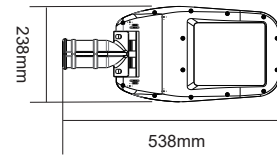
Scope of application: main roads, road lighting in industrial parks, highways, viaducts, Urban street, country road, sidewalk and other road lighting.



**SLH-50W**

Size: 485\*210\*70mm

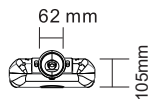
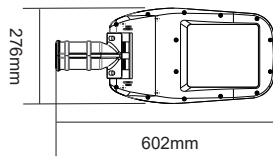
Holder: 62mm



**SLH-100W**

Size: 538\*238\*102mm

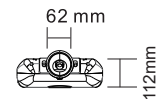
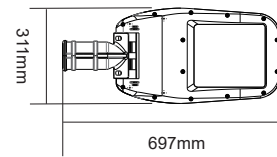
Holder: 62mm



**SLH-150W**

Size: 602\*276\*105mm

Holder: 62mm



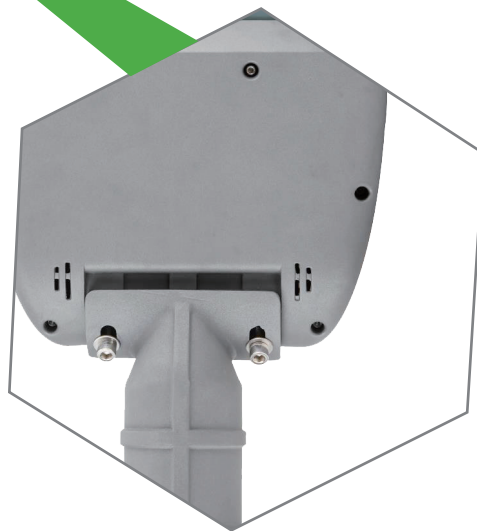
**SLH-200W**

Size: 697\*311\*112mm

Holder: 62mm

## Aluminum display

ADC12 die-cast aluminum radiator, strength and hardness Higher, good surface finish, good heat dissipation, protection The rating reaches IP65.



## Reflector + PC

High reflective reflector cup, high light transmittance, sufficient color development, Comfortable light effect makes LED light source more perfect Show light.



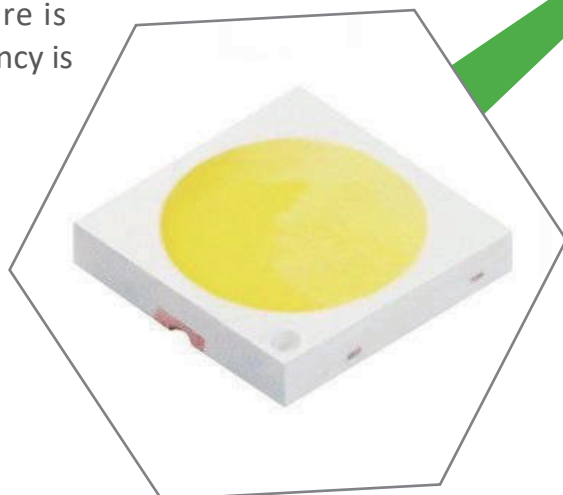
## Power supply

Full voltage Meanwell series drivers, can be used all kinds environment, quality assurance and longer lifetime.



## Light source chip

Using LUMILEDS (Philips) SMD 3030, with high thermal conductivity, low light attenuation, The light color is pure, the finger is high, and there is no ghosting. The light efficiency is up to 130lm / w.





50W



100W



150W



200W

# PRODUCT PARAMETERS

Product model	SED-SLH-50W	SED-SLH-100W	SED-SLH-150W	SED-SLH-200W
Size	485*210*70mm	538*238*102mm	602*276*105mm	697*311*112mm
Power	50W	100W	150W	200W
Light effect	130lm/W	130lm/W	130lm/W	130lm/W
LED QTY	60pcs SMD3030	120pcs SMD3030	180pcs SMD3030	240pcs SMD3030
Material	ADC12 die-casting aluminum			
CCT	3000K,4000K,5000K,6000K			
LED	SMD3030			
CRI	80Ra			
Beam angle	T2、 T3、 T4°			
Power	Ordinary power supply / Ordinary power supply / Meanwell power supply			
Input voltage	AC85-265V;50/60Hz;PF>0.95			
Anti-surge level	>6KV			
Temperature	-30°C~+55°C			
Life time	> 85,000H ours			
IP grade	IP66			
Certificate	CE、 ROSH、 LVD、 EMC			
Warranty	5 years			
Package	SED-SLH-50W 525*245*115mm/1PC N.W.: 1.6KG G.W.: 2.0KG	SED-SLH-100W 555*245*115mm/1PC N.W.: 2.5KG G.W.: 3.0KG	SED-SLH-150W 630*285*115mm/1PC N.W.: 3.3KG G.W.: 3.8KG	SED-SLH-200W 720*330*125mm/1PC N.W.: 4.5KG G.W.: 5.3KG

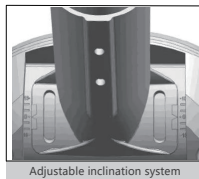
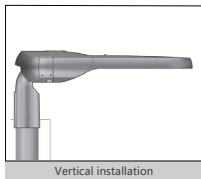
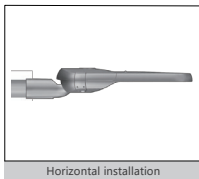


## ★Instructions for use

1. This item working voltage is AC85-265V/AC 50/60 Hz, please don't exceed the working range voltage;
2. Since the lamp has a PC lens accessory, please handle it lightly when move & storage, please do not press hardly.

## ★Installation instructions

1. There are 3 installation methods for the product, please check the following diagram to complete the installation;
2. Working environment temperature  $-30\text{ }^{\circ}\text{C}$ - $+55\text{ }^{\circ}\text{C}$ ;
3. When installing the lamps, all the wires should be sealed to prevent leakage;
4. When connecting an external power cord, corresponding waterproof and water leakage measures must be taken;
5. Anti-glare design, uniform light distribution;
6. Independent power box design, which is beneficial to the heat dissipation of the lamp body, reduces light attenuation and prolongs the service life of the light source;
7. Support light sensor installation, can realize intelligent control of lamps, Improve energy efficiency.



## ★Maintenance instructions

1. Make sure power is off before maintenance;
2. Periodically clean the PC lens of the luminaire to maintain the high transmittance of the luminaire;
3. Regularly clean the lamp housing and the radiator dust to maintain good heat dissipation;
4. Be careful not to use strong corrosive solutions for cleaning.

## ★Warranty & After-sales service

1. This item with full warranty 5 years, under normal conditions of use, quality assurance is based on the correct storage, installation, use and maintenance of the product;
2. Product damage caused by improper installation and use and violation of product operating procedures is not covered by the warranty;
3. For quality problems during the warranty period, our company will fix, replace (parts) or replace new products, Materials and labor costs will be appropriately charged beyond the warranty period.