



Boom/chain installation

## **SED –GKC LED Fin high bay light**

Suitable for various engineering lighting of factories/  
workshops/warehouses



## Smart Electronics Design Co., Limited Focus On Led Light Design&Manufacturer



Energy-saving  
soft light



Better heat  
dissipation



Not easy  
to damage



Stable  
performance

## High-power lighting range

The height and lifespan are brighter than ordinary industrial and mining lamps, and the irradiated area is wider, the light distribution is uniform, and the light is abundant and bright.

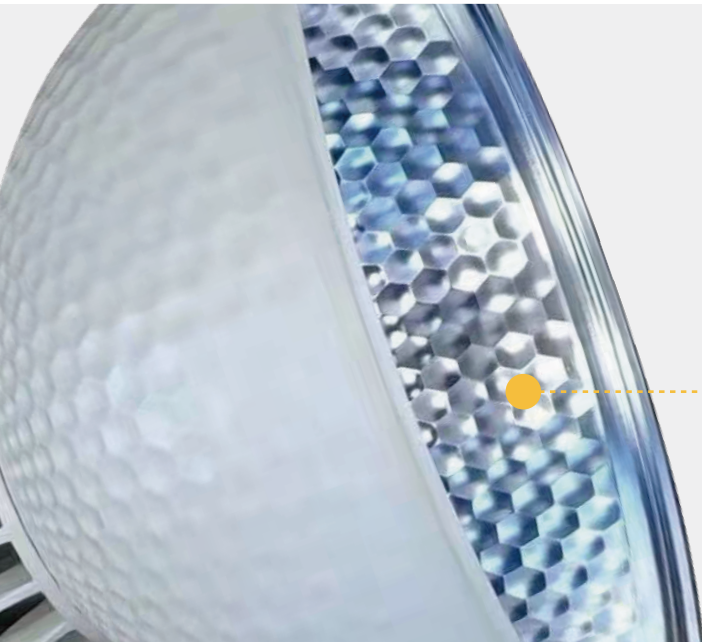


IP65

LM80

# Show details

---

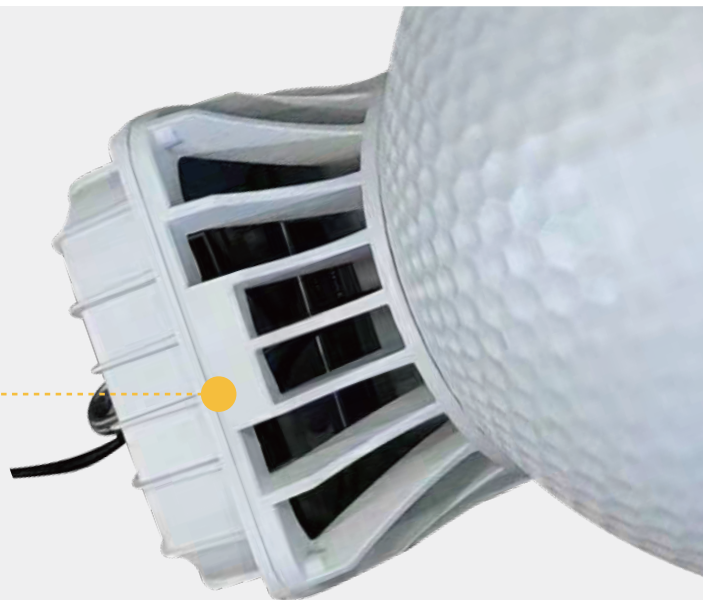


## Aluminum reflective mask

The aluminum reflector contains multiple refraction grooves to make the emitted light uniform and the irradiation range is wider.

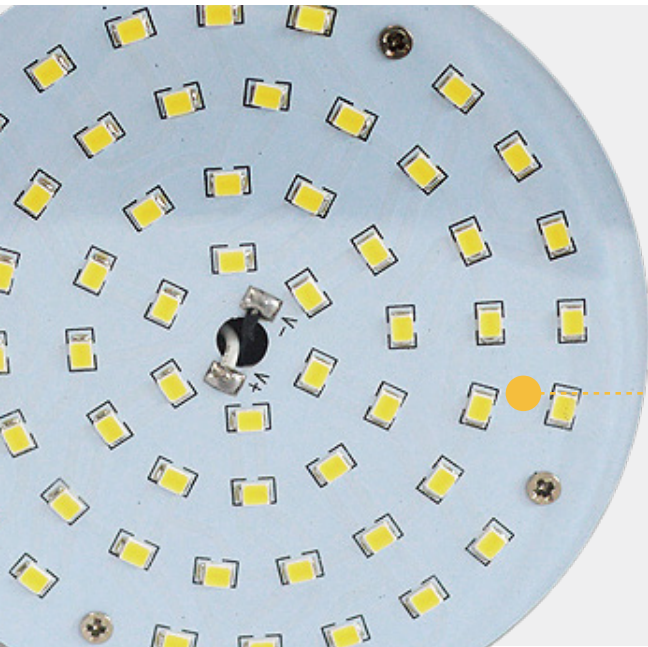
## Aluminum radiator

Adopt fin aluminum radiator strong convection heat dissipation design, increase heat dissipation performance, ensure lamp bead working temperature, stable use.



# Show details

---



## Bright LED chip

Using high-power quality LED chips, good light efficiency, high color rendering index, low heat, bright and uniform light.

## High color rendering index

The color reproduction rate is high, close to the color rendering index of sunlight, which can present true and natural colors.





High: 4-6m  
Scope: 40m<sup>2</sup>

80W

High: 7-8m  
Scope: 50m<sup>2</sup>

100W

High: 9-10m  
Scope: 60m<sup>2</sup>

150W

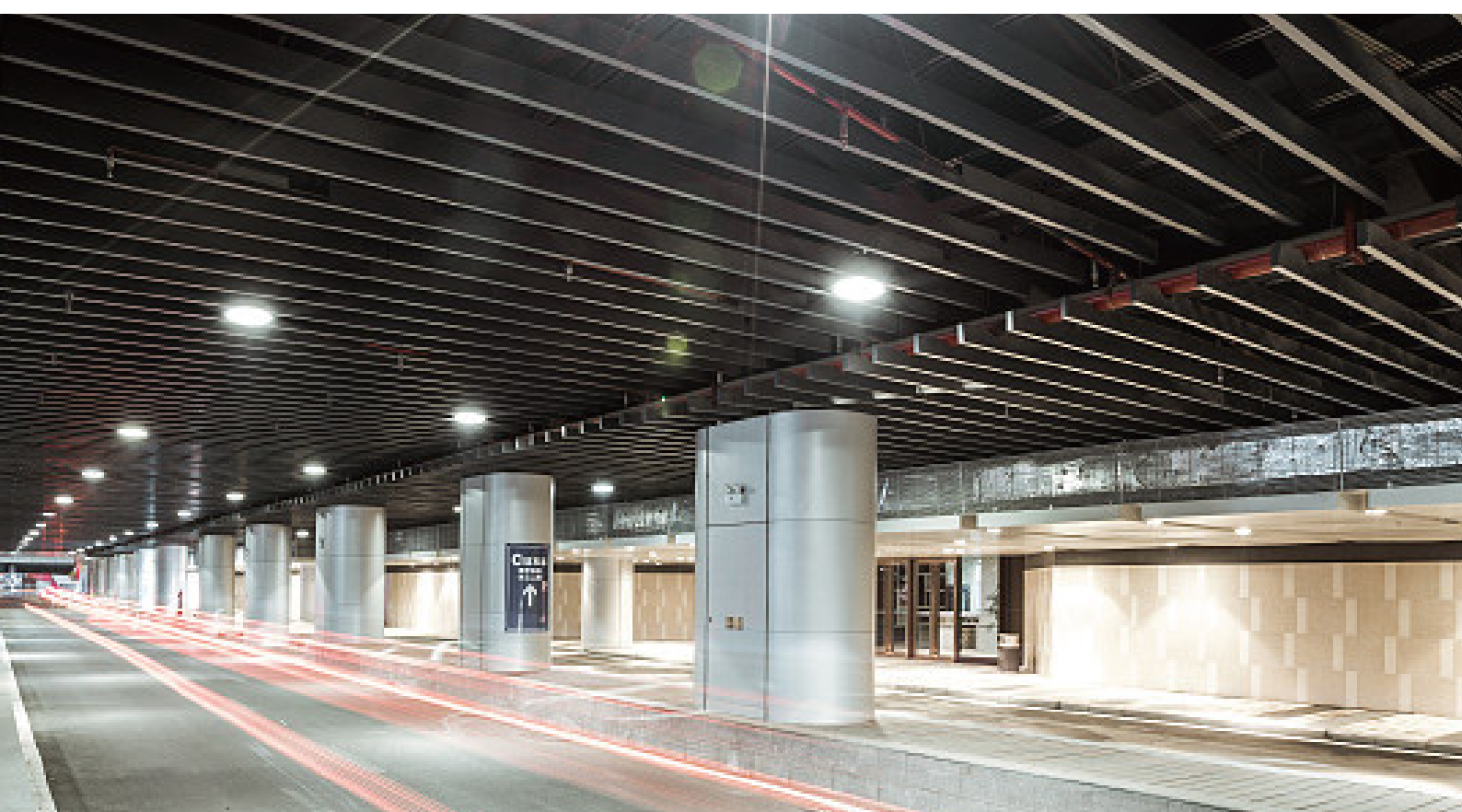
High: 11-12m  
Scope: 70m<sup>2</sup>

200W



# Scenario shows

---



# Product parameter

---

| Model        | Power | LED             | Luminous flux | Size      | Qty(1 box) | KG   |
|--------------|-------|-----------------|---------------|-----------|------------|------|
| SED-GKC-80W  | 80W   | 100PCS, SMD3030 | >10400LM      | 400*365mm | 8pcs       | 20KG |
| SED-GKC-100W | 100W  | 110PCS, SMD3030 | >13000LM      | 400*365mm | 8pcs       | 20KG |
| SED-GKC-150W | 150W  | 165PCS, SMD3030 | >19500LM      | 400*365mm | 8pcs       | 20KG |
| SED-GKC-200W | 200W  | 220PCS, SMD3030 | >26000LM      | 450*425mm | 8pcs       | 36KG |