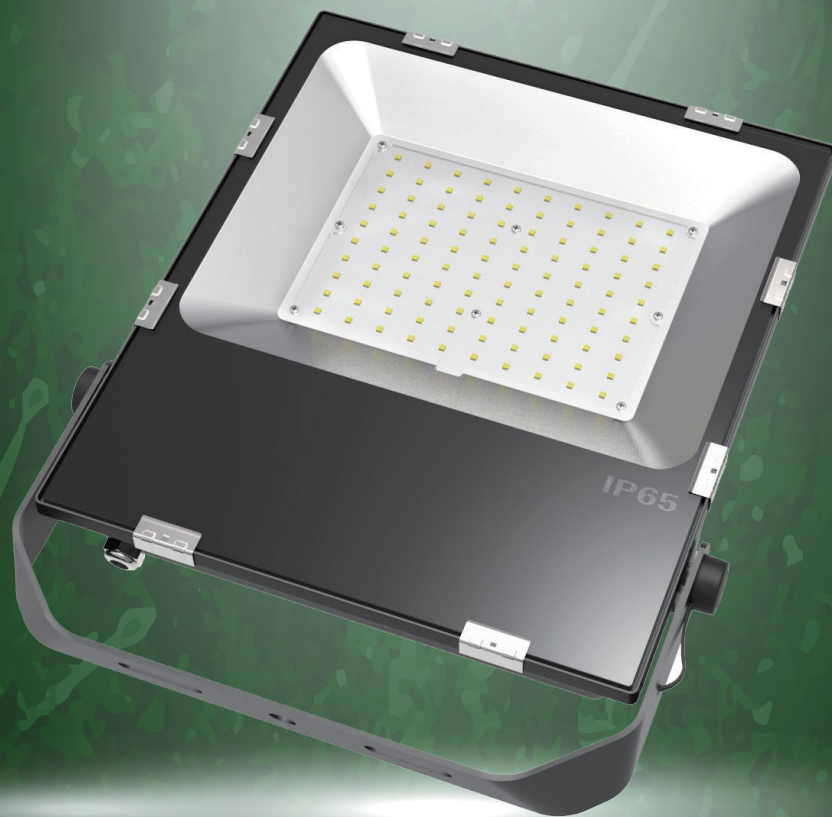


# LED FLOOD LIGHT

Power: 100W

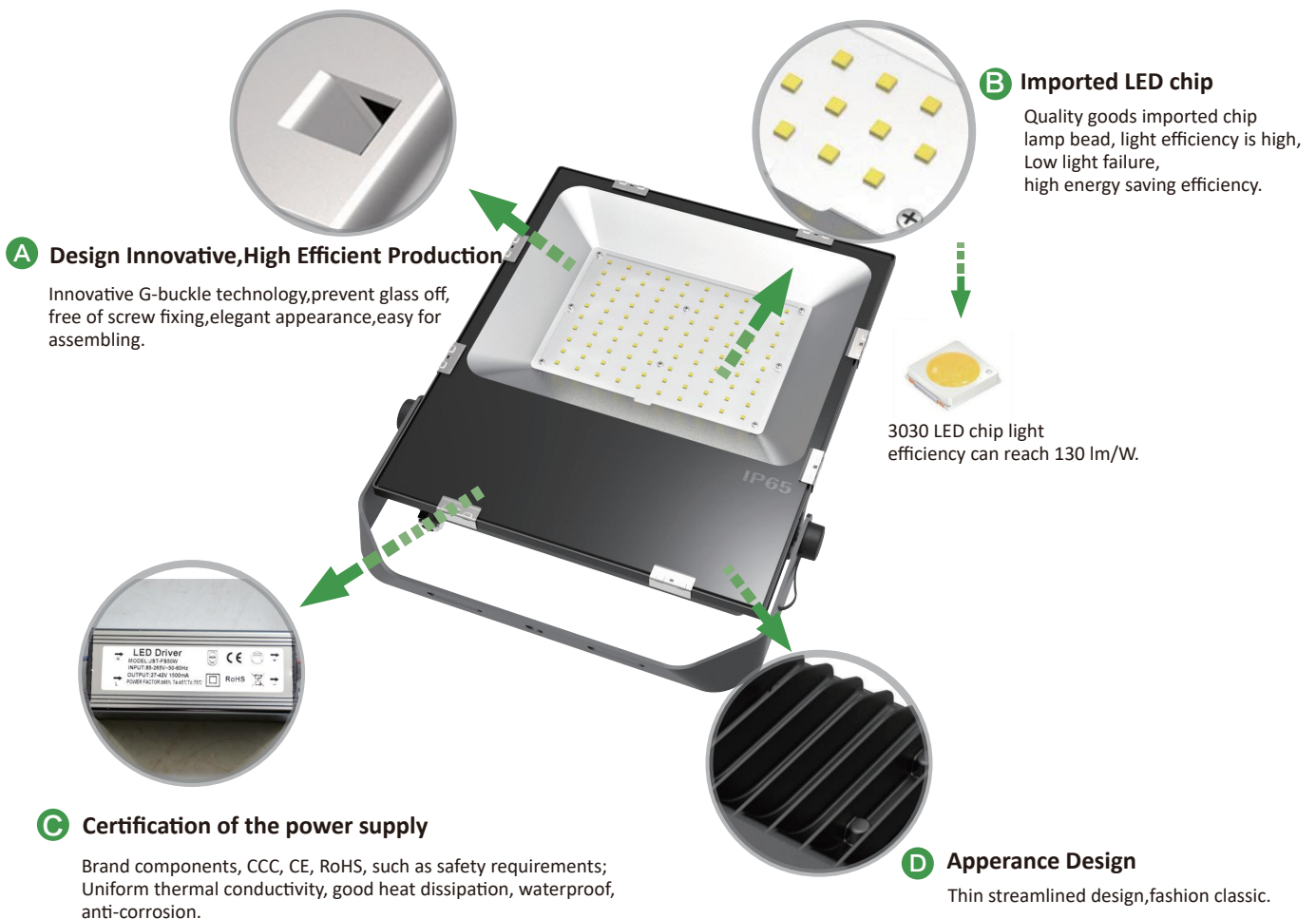


## Feature

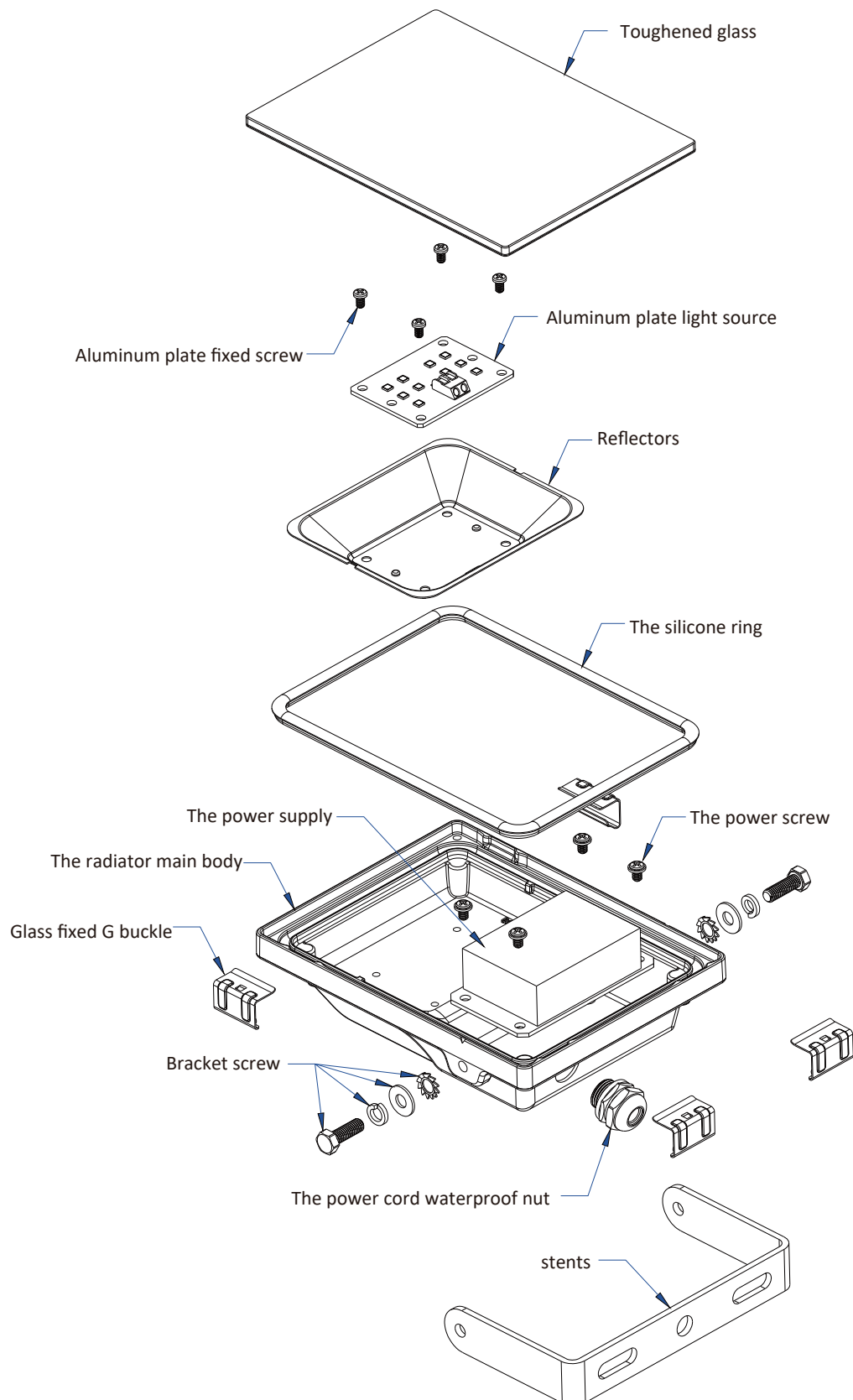
- Ultra-slim sleek design,stylish and classic.
- Total 8 model of heat sink,full range from 10w to 200w,choose as you like.
- Reflector and heat sink integrated,pure aluminum structure for heat dissipation.
- Professional optical design,luminous efficiency is increased by 50%.
- Innovative G-buckle technology,prevent glass off,easy for assembling.
- 3/5 years warranty, life-time maintenance at cost price.
- Degree of protection:IP65.



## Product details



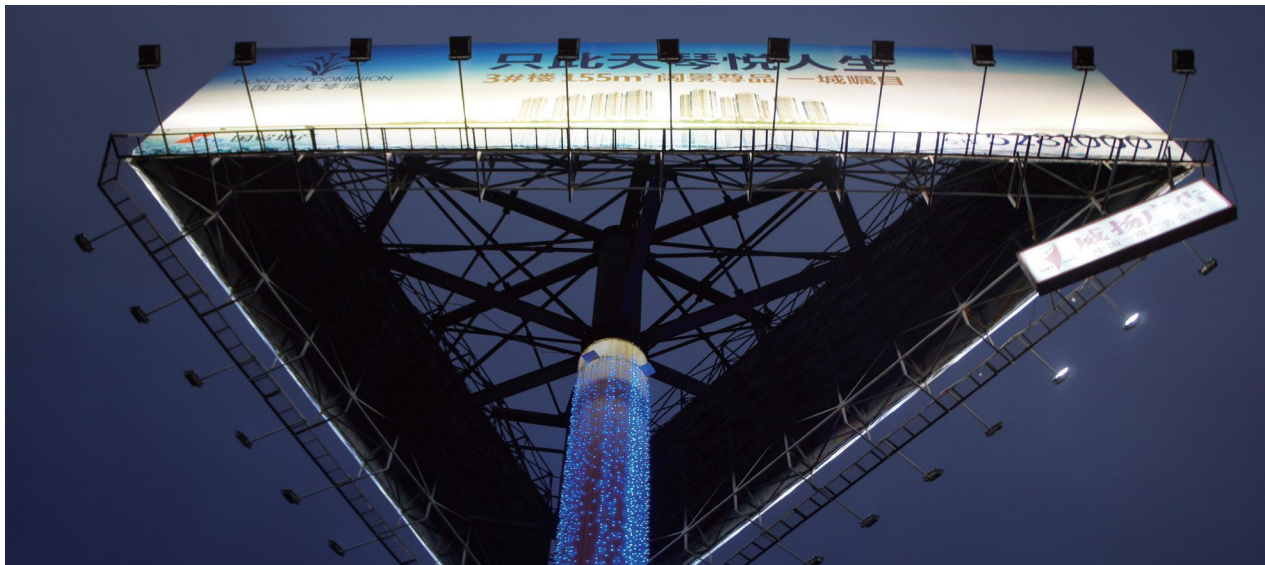
## Explosive view





## Scene display

Widely used in shopping mall,exhibition hall,parking lot,playground,gymnasium,billboards,park,sculpture, national green lighting project,building facade and public corridor,stair corridor and other indoor and outdoor lighting.



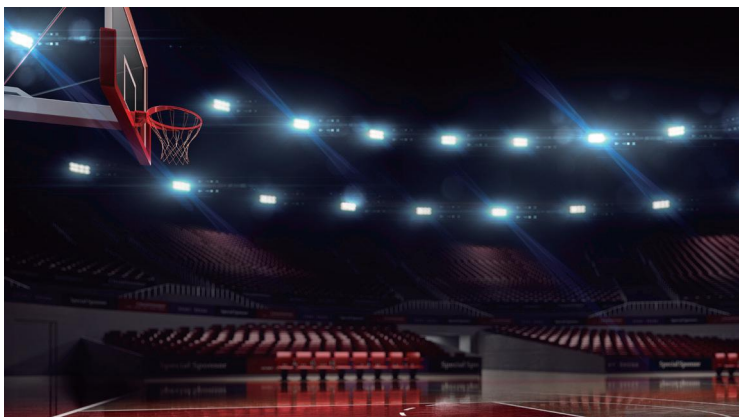
Billboard application



The playground application



Building facade application



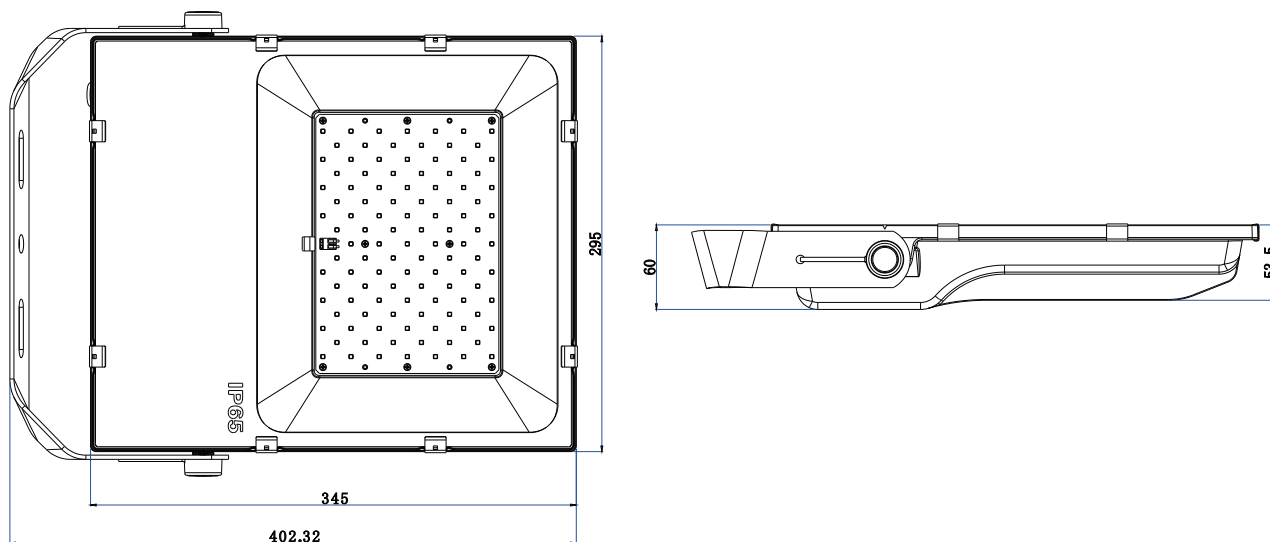
The gym application



## Specifications

Input watt	100W		
Luminous Efficacy	130LM/W		
Imput voltage	AC85-265V		
Frequency (Hz)	50-60HZ		
Power factor	>0.98		
CCT	2700K±200K	4000K±200K	6500K±200K
LED chip&Qty	Philips SMD3030 (100PCS)		
Driver	CE certified power supply	Meanwell ELG-100	
CRI	>80		
Product size	402*295*60mm		
N.W.	4kg		
Environment temperature	-20°C--+45°C		
Certificates	CE、 ROHS、 ETL		
Lifespan	50000H		
Warranty	5 years		

## Product size



## Package size

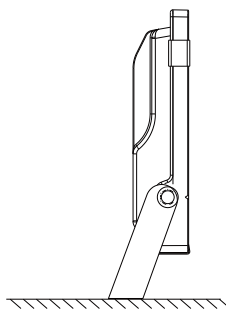
Power	Size	Net Weight	Carton size	Quantity
100W	402*295*60mm	4kg	490*370*130mm	1pcs/4.9kg

The following is a neutral cowhide carton packing, such as the need to print LOGO, can be customized.

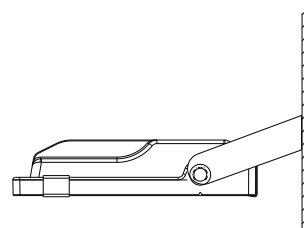


## Installation

- 1.Safety is first.
- 2.This series of flood lights can be installed with many ways, such as sitting installed, Wall-mounted installation and so on.
- 3.The installation shall be completed by experienced electrician.
4. Any further questions, feel free to get us for more solutions.



sitting installed



Wall-mounted installed

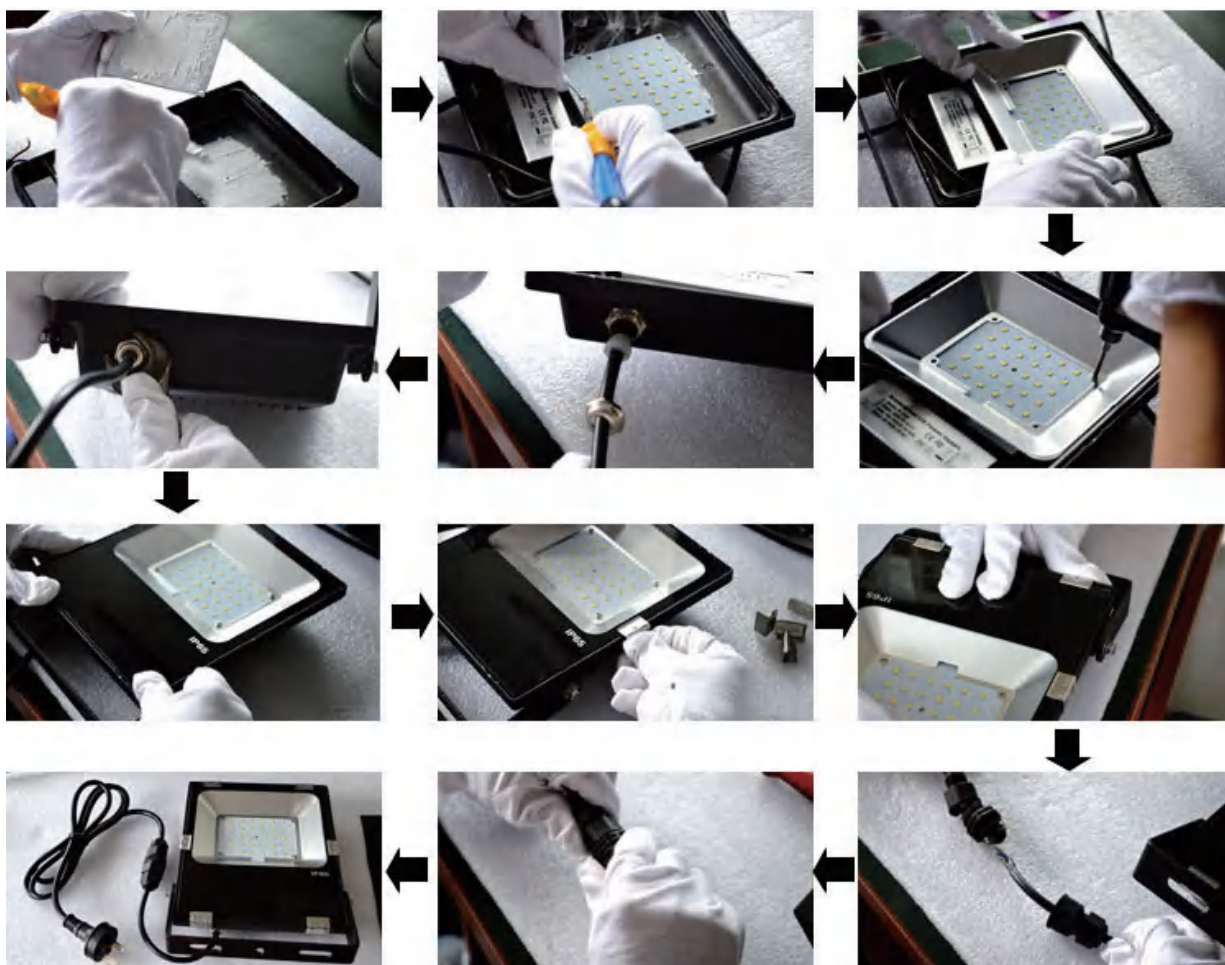
## Cautions



- Lightning Protection: Meanwell driver can resist 6KV surge, if the using environment out of this range, please add higher grade surge terminal.
- Degree of Protection: IP65, can be applied outdoor, but immersed in water. The tempered glass shall not be knocked by any pointed thing.
- Don't take apart the product or replace mechanical and electronic components.
- Don't stare at the strong light for a long time as it may cause injury to eyes.
- No specific requirements, the wires shall be 3\*0.75 without plug, if yes, keep it informed by the sales.
- This series of lights are not compatible with ballast, when replacing the tradtional lamps,please remove the ballast or contact us for more solutions.



## Production process



## Aging test





## Test report

### IES test

